



Cybersecurity

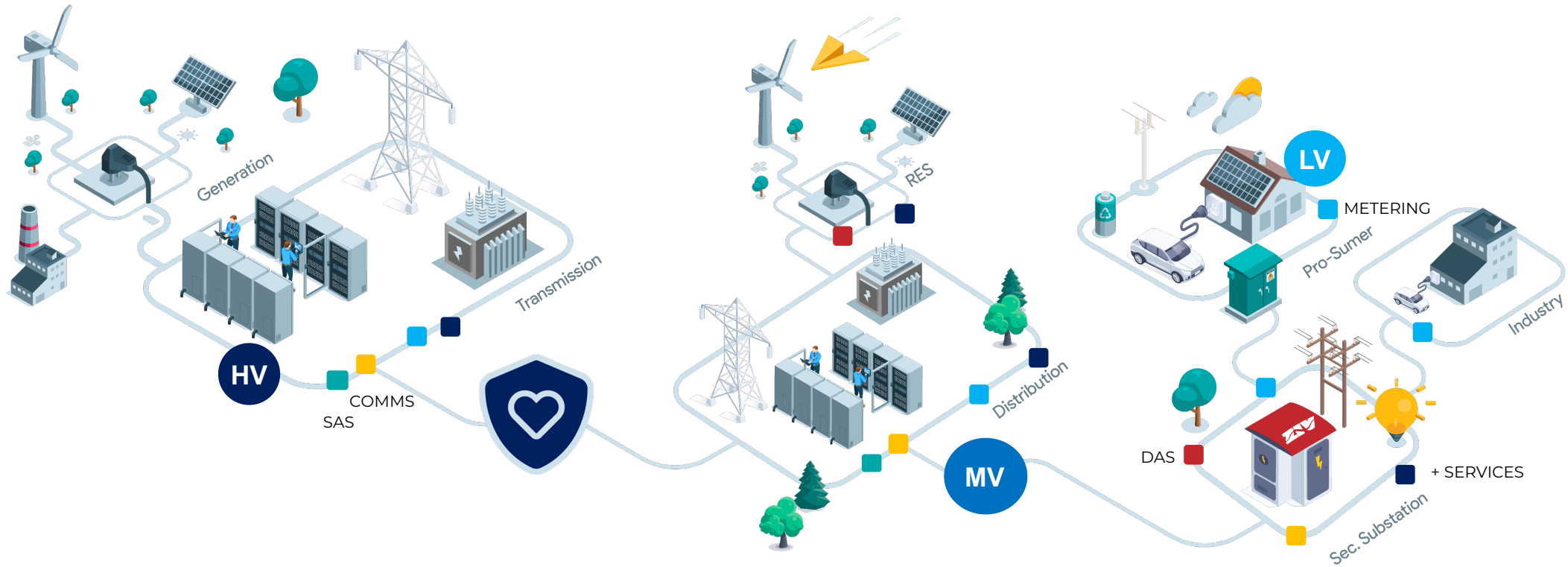


ZIV focuses on **cybersecurity** throughout the **entire life cycle** of its products from **design, implementation, testing, and manufacturing** through to **deployment, operation, maintenance and disposal**



Cybersecurity

applies to all of the company procedures & products



Role Based Access Control (RBAC)



Remote User Authentication



Secure Communications



Credential Management (PKI)



Firmware Security



Logging and Auditing

Cybersecurity

Key Features

Role Based Access Control (RBAC)

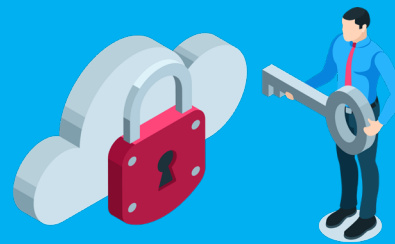
Up to **20** roles can be configured in the devices, each containing one or more permissions (up to **8**) to comply with least privilege and segregation of duty policies.



Local and Centralised User Authentication

Users can be authenticated against LDAP or RADIUS centralised repositories, or against local user databases in the device, where up to 20 local users can be defined applying strong password policies.

Return to local authentication when centralised repositories are not available can be enabled.



Secure Communications

Secure versions of the protocols are available in the devices (SSH, SFTP, HTTPS, PROCOM over TLSv1.2, LDAPS / StartTLS).

Mutual authentication is available in TLS communications.



Physical Ports and Services can be configured, so that unused ports and services can be disabled.

Cybersecurity

Key Features

Role Based Access Control (RBAC)

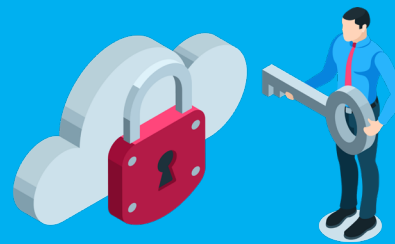
Up to **20** roles can be configured in the devices, each containing one or more permissions (up to **8**) to comply with least privilege and segregation of duty policies.



Local and Centralised User Authentication

Users can be authenticated against LDAP or RADIUS centralised repositories, or against local user databases in the device, where up to 20 local users can be defined applying strong password policies.

Return to local authentication when centralised repositories are not available can be enabled.



Secure Communications

Secure versions of the protocols are available in the devices (SSH, SFTP, HTTPS, PROCOM over TLSv1.2, LDAPS / StartTLS).

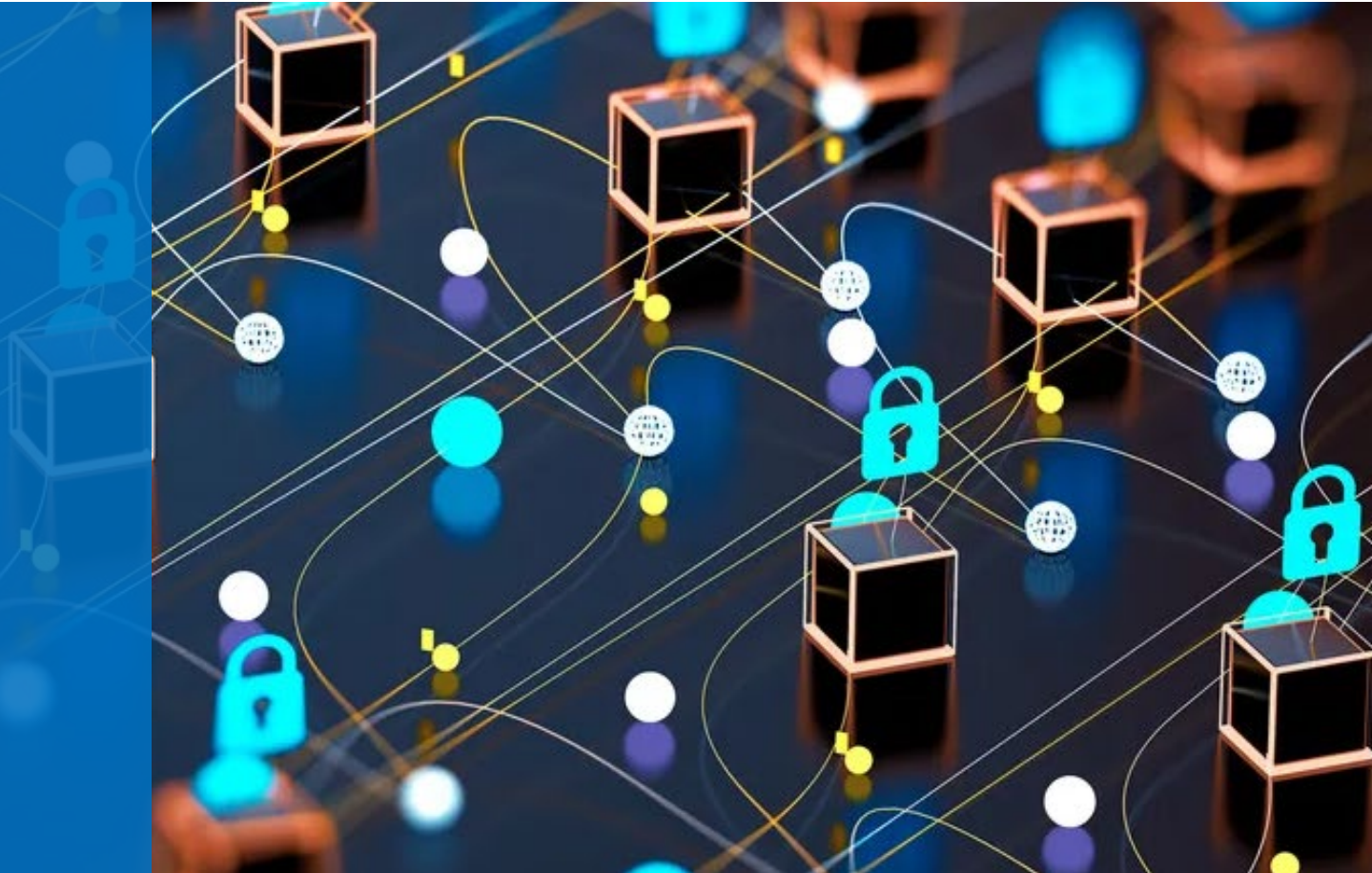
Mutual authentication is available in TLS communications.



Physical Ports and Services can be configured, so that unused ports and services can be disabled.



ZIV cybersecurity solution has been implemented considering the **leading cybersecurity standards** and guidelines, such as IEC 62443, IEC 62351, IEEE 1686 and NERC CIP





Contact us now for further information

ziv@zivautomation.com